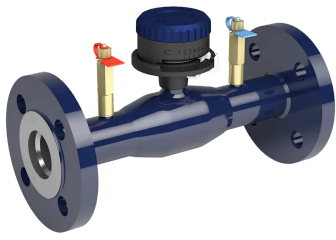


Vexve balancing valve, steel

Series 143, flange / flange, reduced bore, DN 15-400, PN 16-25

Page 1



DN 15-50



DN 65-150



DN 200-300



DN 350-400

Materials

Body	DN 15-400: Steel, P235GH (1.0345)
Ball	DN 15-50: Stainless steel, X5CrNi18-10 (1.4301), flowtube composite DN 65-400: Stainless steel, X5CrNi18-10 (1.4301)
Ball seal	DN 15-400: PTFE+GF
Stem	DN 15-100: Stainless steel, X8CrNiS18-9 (1.4305) DN 125-150: Stainless steel, X17CrNi16-2 (1.4057) DN 200-400: Stainless steel, X8CrNiS18-9 (1.4305)
Stem seal	DN 15-400: FPM
Measuring block	DN 15-400: Self-sealing, brass / EPDM

Mounting

flange / flange	EN 1092-1 Available PN 10, 16, 25, 40
------------------------	--

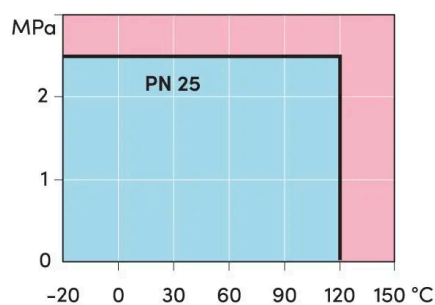
Operation

DN 15-50	control knob
DN 65-150	zinc-plated steel handle
DN 200-400	manual gear

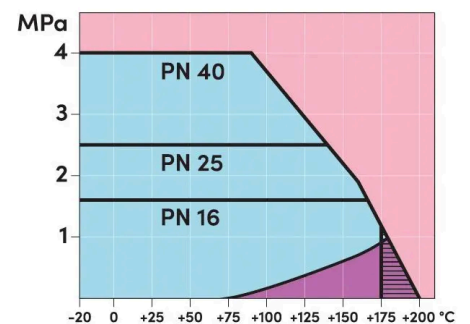
Operating conditions

Temperature	-20 °C - +200 °C
Leakage rate	A (EN 12266-1)

DN 15-50: -20 °C - +120 °C. Below -20°C contact manufacturer. Lowest allowed ambient temperature -40°C.



DN 15-50



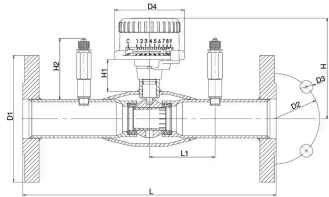
DN 65-400

■ water area
 ■ Steam area (not allowed)
 short-term working area

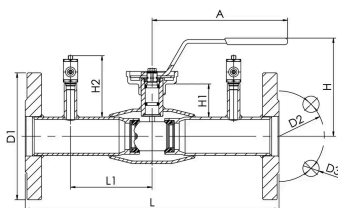
Vexve balancing valve, steel

Series 143, flange / flange, reduced bore, DN 15-400, PN 16-25

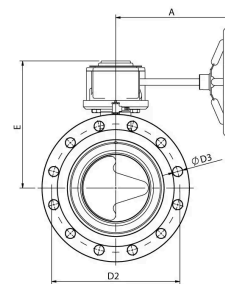
Page 2



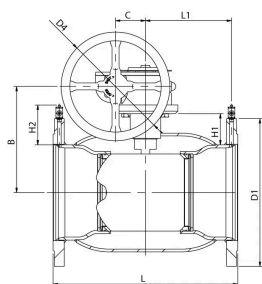
DN 15-50



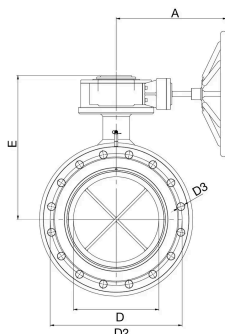
DN 65-150



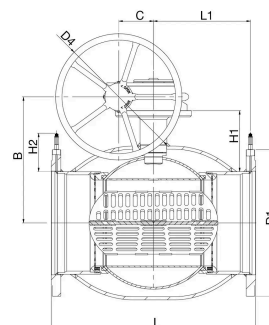
DN 200-300



DN 200-300



DN 350-400



DN 350-400

Dimensions

DN	PN	Product no.	A	B	C	D	D1	D2	D3	D4	E	H	H1	H2	L	L1	Kg
15	25	143015X					95	65	14	77		101	38.5	68	250	73.0	2.0
20	25	143020X					105	75	14	77		105	38.0	68	250	73.0	2.8
25	25	143025X					115	85	14	77		107	37.0	68	240	73.0	3.1
32	25	143032X					140	100	18	77		111	35.0	68	280	73.0	4.9
40	25	143040X					150	110	18	77		116	35.0	68	270	73.0	5.4
50	25	143050X					165	125	18	77		123	39.0	68	310	73.0	7.2
65	16	143065	280.0				185	145	18			160	58.0	108	310	110.0	10.5
80	16	143080	280.0				200	160	18			173	64.0	108	310	110.0	12.6
100	16	143100	280.0				220	180	18			219	98.0	132	350	122.5	17.5
125	16	143125	400.0				250	210	18			253	100.0	130	360	137.5	26.1
150	16	143150	600.0				285	240	22			276	110.0	131	370	150.0	34.6
200	16	143200	268.0	244	69		340	295	22	250	293		72.0	126	425	198.0	61.0
250	16	143250	301.0	294	97		405	355	26	300	345		88.0	132	550	259.0	116.0
300	16	143300	424.0	349	138		460	410	26	600	422		112.0	134	580	272.0	163.0
350	16	143350	424.0	424	138	290.0	520	470	26	600	498		192.0	148	706	333.5	275.0
400	16	143400	440.0	500	138	340.0	580	525	30	500	573		242.0	152	810	384.0	382.0

Vexve's balancing valves can be found e.g. from libraries of TA-SCOPE and SmartBalancing measuring devices.