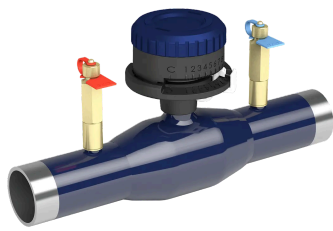


Vexve Balancing valve, steel

Series 140, welding / welding, EN (DIN), reduced bore, DN 15-400, PN 25

Page 1



DN 15-50



DN 65-150



DN 200-300



DN 350-400

Materials

Body	DN 15-400: Steel, P235GH (1.0345)
Ball	DN 15-50: Stainless steel, X5CrNi18-10 (1.4301), flowtube composite DN 65-400: Stainless steel, X5CrNi18-10 (1.4301)
Ball seal	DN 15-400: PTFE+GF
Stem	DN 15-100: Stainless steel, X8CrNiS18-9 (1.4305) DN 125-150: Stainless steel, X17CrNi16-2 (1.4057) DN 200-400: Stainless steel, X8CrNiS18-9 (1.4305)
Stem seal	DN 15-400: FPM
Measuring block	DN 15-400: Self-sealing, brass / EPDM

Mounting

welding / welding, EN (DIN)

Operation

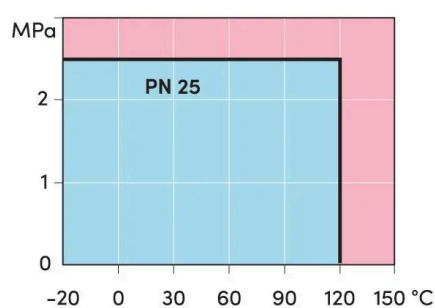
DN 15-50	control knob
DN 65-150	zinc-plated steel handle
DN 200-400	manual gear

Operating conditions

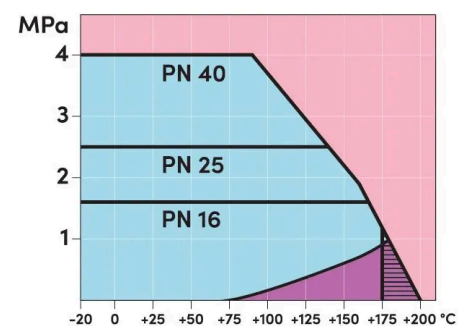
Temperature -20 °C - +200 °C

Leakage rate A (EN 12266-1)

DN 15-50: -20 °C - +120 °C. Below -20 °C contact manufacturer. Lowest allowed ambient temperature -40 °C.



DN 15-50



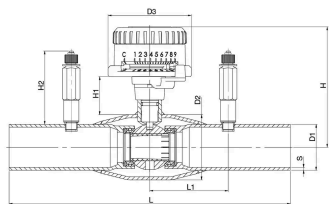
DN 65-400

■ water area
 ■ Steam area (not allowed)
 short-term working area

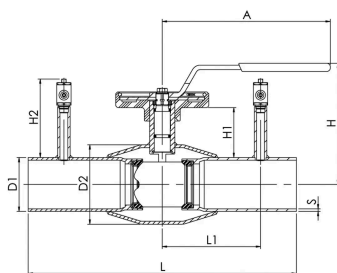
Vexve Balancing valve, steel

Series 140, welding / welding, EN (DIN), reduced bore, DN 15-400, PN 25

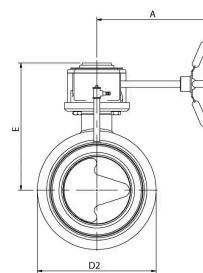
Page 2



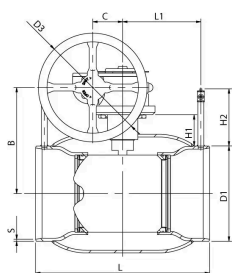
DN 15-50



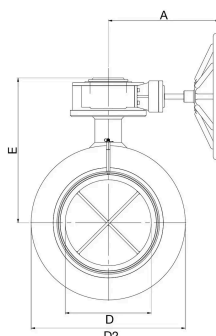
DN 65-150



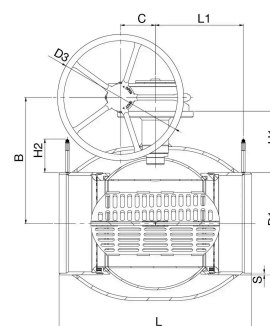
DN 200-300



DN 200-300



DN 350-400



DN 350-400

Dimensions

DN	PN	Product no.	A	B	C	D	D1	D2	D3	E	H	H1	H2	L	L1	S	Kg
15	25	140015X					21.3	33.7	77		101	38.5	68	230	73.0	2.0	0.8
20	25	140020X					26.9	42.4	77		105	38.0	68	230	73.0	2.3	1.0
25	25	140025X					33.7	48.3	77		107	37.0	68	230	73.0	2.6	1.1
32	25	140032X					42.4	60.3	77		111	35.0	68	260	73.0	2.6	1.5
40	25	140040X					48.3	70.0	77		116	35.0	68	260	73.0	2.6	1.7
50	25	140050X					60.3	76.1	77		123	39.0	68	300	73.0	2.9	2.3
65	25	140065	280.0				76.1	101.6			160	58.0	108	300	110.0	2.9	4.8
80	25	140080	280.0				88.9	121.0			173	64.0	108	300	110.0	3.2	6.1
100	25	140100	280.0				114.3	146.0			219	98.0	130	325	122.5	3.6	9.4
125	25	140125	400.0				139.7	177.8			253	100.0	130	325	137.5	4.0	16.2
150	25	140150	600.0				168.3	219.1			276	110.0	130	350	150.0	4.5	21.3
200	25	140200	268.0	244	69		219.1	273.0	250	293		72.0	132	400	180.0	4.5	45.0
250	25	140250	301.0	294	97		273.0	355.6	300	345		88.0	132	530	225.0	5.0	90.0
300	25	140300	424.0	349	138		323.9	457.0	600	422		112.0	132	550	245.0	5.6	129.0
350	25	140350	424.0	424	138	290.0	355.6	508.0	600	498		192.0	132	686	305.0	6.3	220.0
400	25	140400	440.0	500	138	340.0	406.4	610.0	500	573		242.0	132	762	349.0	7.0	340.0

Vexve's balancing valves can be found e.g. from libraries of TA-SCOPE and SmartBalancing measuring devices.